

NORTHEAST METRO NATURAL GAS PROJECT

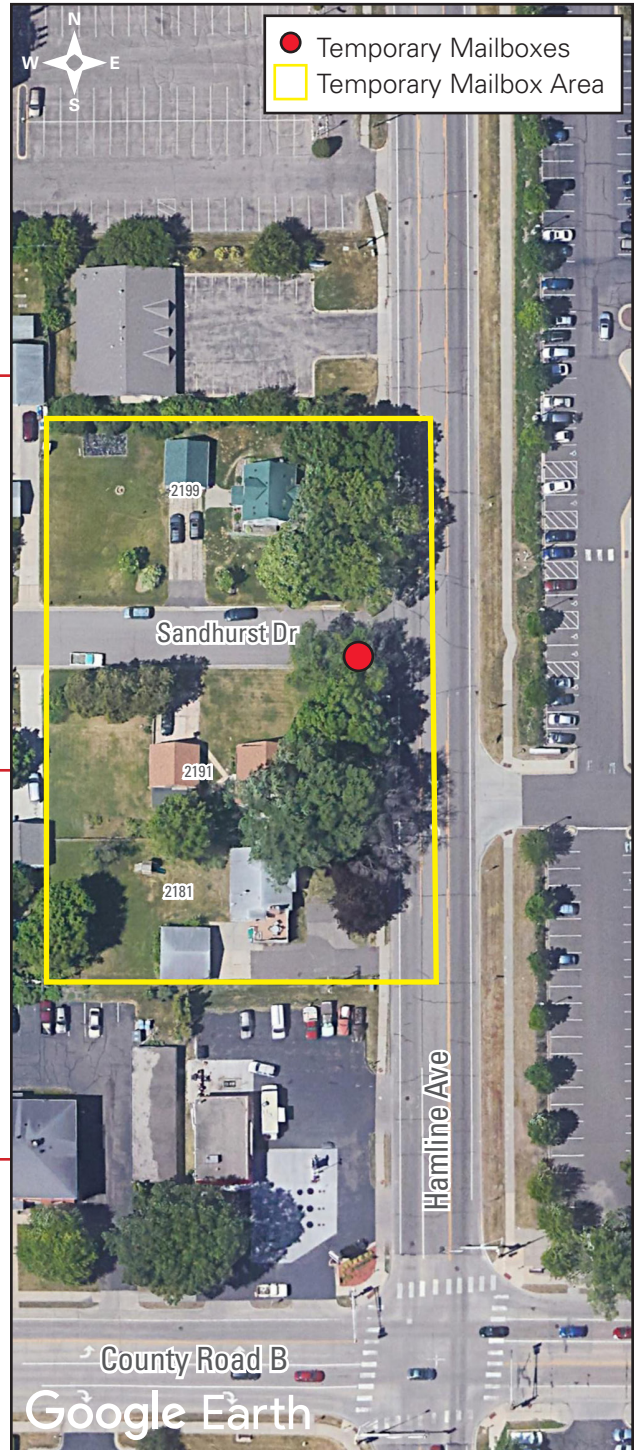
TEMPORARY MAILBOX RELOCATION



Temporary Mailbox Relocation

We will temporarily relocate mailboxes along Hamline Avenue, between County Road B and Commerce St, during construction. To locate your mailbox, please see the map at right.

We have coordinated with the Roseville Postal Service for your mail delivery. After construction, we will restore your mailbox to its original location and your regular mail delivery will resume.



Curbside Trash and Recycling Pickup

Please place your trash and recycling bins in front of your property as usual on pickup days. If needed, crews will move your bins outside work areas for pickup and return them later that day.

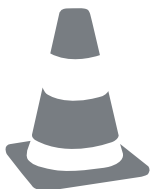
We are coordinating with your trash and recycling company for pickups during construction.



Overview

We are replacing 12 miles of natural gas lines in Ramsey County for the Northeast Metro Natural Gas Project. Construction began in spring 2019 and is expected to be completed in fall 2022.

This work allows us to continue to provide safe, reliable service and enhances system resiliency during extreme weather.



Safety

Public safety is at the foundation of all we do. The safety of the public around Xcel Energy's natural gas system influences every decision we make.

If you suspect a natural gas leak, leave your home or business immediately. Once you are safely away, call **911**, then Xcel Energy at **800-895-2999**.

This map is a graphic and may not show exact locations.



Contact Us

833-676-4369

XcelEnergyNEMetroGasProject.com

info@